



Hi Everyone and welcome to this week's activity pack featuring animals. Where would we be without our furry friends?

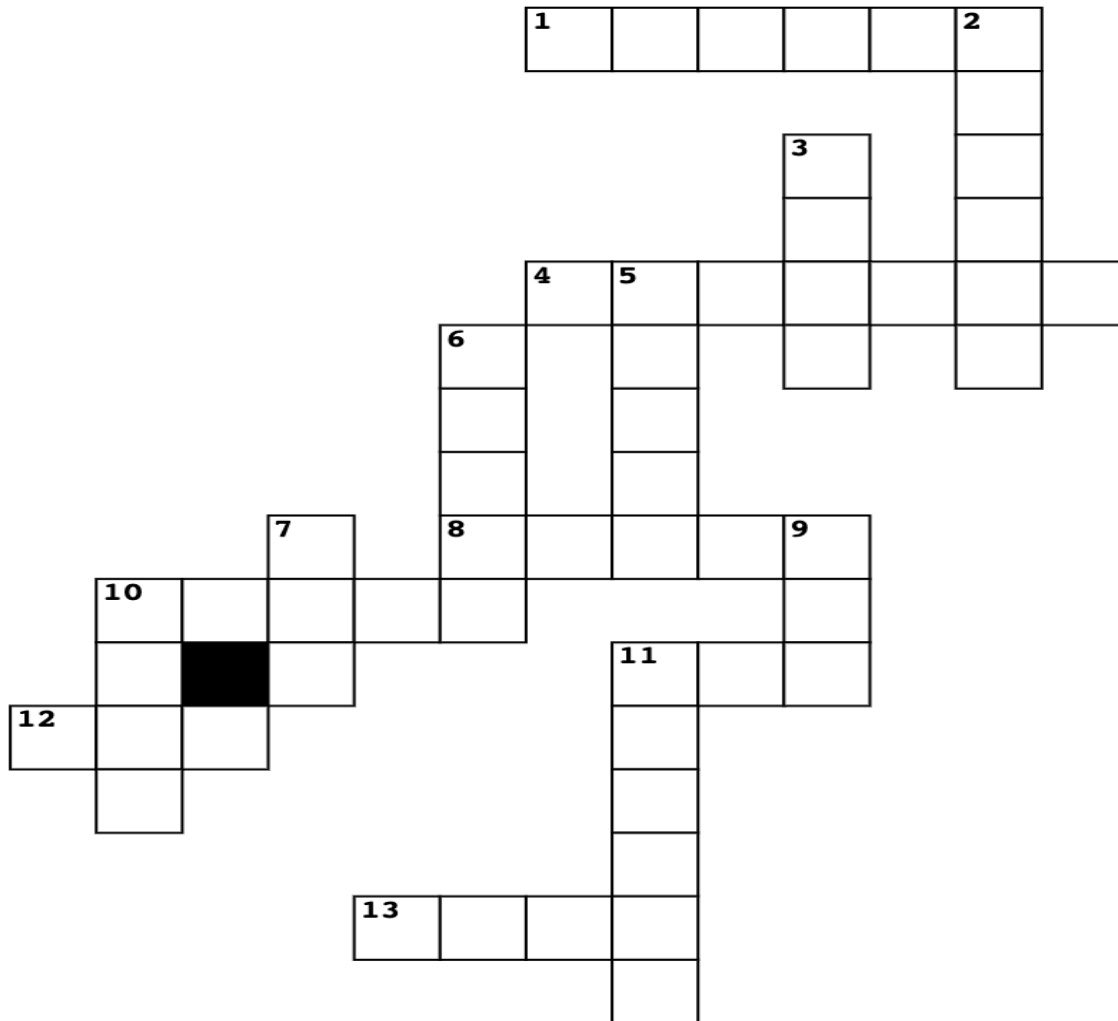
We hope you have a great week and if you want to request something particular for a future activity pack – please let us know!!

You can contact us on 9727 2222 or at [caladenia@caladenia.com.au](mailto:caladenia@caladenia.com.au) to let us know your ideas!!

Have a great week – we are thinking of you!

Your friends at Caladenia

## Farm Animal Crossword – Answers on page 22



### Across

1. Long-eared carrot snackers
4. Why did the \_\_\_\_ cross the road?
8. Wooly friends of Little Bo Peep
10. Honking egg layer
11. Man's best friend
12. Pet with 9 lives
13. Half donkey, half horse

### Down

2. Traditional Thanksgiving food
3. Could be a mallard
5. A jockey would ride this animal
6. Small rodent that enjoys cheese
7. Large mooing animal
9. Wilbur or Babe
10. Billy \_\_\_\_\_

## Sudoku - Answers on page 23

How to play:

- Use Numbers 1-9 to fill empty boxes.
- Don't Repeat Any Numbers in any 3x3 square, row or column.
- Use Process of Elimination.

		8						
1 2 3 4 5 6 7 8 9	1 2 3 4 5 6 7 8 9		1 2 3 4 5 6 7 8 9	1 2 3 4 5 6 7 8 9	1 2 3 4 5 6 7 8 9	1 2 3 4 5 6 7 8 9	1 2 3 4 5 6 7 8 9	1 2 3 4 5 6 7 8 9
		5	2					6
1 2 3 4 5 6 7 8 9	1 2 3 4 5 6 7 8 9		1 2 3 4 5 6 7 8 9	1 2 3 4 5 6 7 8 9	1 2 3 4 5 6 7 8 9	1 2 3 4 5 6 7 8 9	1 2 3 4 5 6 7 8 9	
1 2 3 4 5 6 7 8 9	1 2 3 4 5 6 7 8 9	1 2 3 4 5 6 7 8 9	1 2 3 4 5 6 7 8 9	1 2 3 4 5 6 7 8 9	1 2 3 4 5 6 7 8 9	1 2 3 4 5 6 7 8 9	1 2 3 4 5 6 7 8 9	1 2 3 4 5 6 7 8 9
				1		2		
1 2 3 4 5 6 7 8 9	1 2 3 4 5 6 7 8 9	1 2 3 4 5 6 7 8 9	1 2 3 4 5 6 7 8 9		1 2 3 4 5 6 7 8 9		1 2 3 4 5 6 7 8 9	1 2 3 4 5 6 7 8 9
	4		5				8	1
1 2 3 4 5 6 7 8 9		1 2 3 4 5 6 7 8 9		1 2 3 4 5 6 7 8 9	1 2 3 4 5 6 7 8 9	1 2 3 4 5 6 7 8 9		
6	5			3				9
		1 2 3 4 5 6 7 8 9	1 2 3 4 5 6 7 8 9		1 2 3 4 5 6 7 8 9	1 2 3 4 5 6 7 8 9	1 2 3 4 5 6 7 8 9	
5			3	8		9	4	
	1 2 3 4 5 6 7 8 9	1 2 3 4 5 6 7 8 9			1 2 3 4 5 6 7 8 9			1 2 3 4 5 6 7 8 9
	8			4				2
1 2 3 4 5 6 7 8 9		1 2 3 4 5 6 7 8 9	1 2 3 4 5 6 7 8 9		1 2 3 4 5 6 7 8 9	1 2 3 4 5 6 7 8 9	1 2 3 4 5 6 7 8 9	
3			1		9	6		
	1 2 3 4 5 6 7 8 9	1 2 3 4 5 6 7 8 9		1 2 3 4 5 6 7 8 9			1 2 3 4 5 6 7 8 9	1 2 3 4 5 6 7 8 9

## Daily Jumble

I	L	Z	R	D	A
---	---	---	---	---	---

---

E	A	N	P	H	L	E	T
---	---	---	---	---	---	---	---

---

Z	B	E	R	A
---	---	---	---	---

---

I	P	H	P	O
---	---	---	---	---

---

U	S	E	M	O
---	---	---	---	---

---

*Answers: Lizard, Elephant, Zebra, Hippo, Mouse*

## Word Mining

How many words can you make from this phrase?

**“Raining Cats and Dogs”**




**Trivia!**

*How much do you know?*

1. How many years can a snail sleep?
  - a. 1 year
  - b. 3 years
  - c. 5 years
  - d. 7 years
  
2. What is a rhinoceros' horn made of?
  - a. Bone
  - b. Cartilage
  - c. Hair
  - d. Skin
  
3. How long does it take for a sloth to digest its food?
  - a. 1 day
  - b. 3 days
  - c. 1 week
  - d. 2 weeks
  
4. Approximately, how many glasses of milk will a cow produce in its lifetime?
  - a. 100,000
  - b. 150,000
  - c. 200,000
  - d. 250,000

5. Which creature has the world's fastest punch?
- a. Kangaroo
  - b. Mantis Shrimp
  - c. Orangutan
  - d. Prairie Dog
6. When does the oldest known domesticated dog breed date back to?
- a. 329 BC
  - b. 424 AC
  - c. 223 BC
  - d. 603 AC



Answers: 1. B / 2. C / 3. D / 4. B / 5. B / 6. A

## Coloring for Mindfulness





## Today I Learned .... Cryptozoology

Have you seen Sasquatch? Do you believe in the chupacabra? What about cryptids? Not sure what that means, don't worry! In this brief lesson, you'll learn about Cryptozoology, a pseudoscience and subculture aimed at proving the existence of mythological creatures as well as some of the most famous cryptids.

### About Cryptozoology

The term *cryptozoology* dates from 1959 or before and means 'the study of hidden animals'. Cryptids are those who study cryptozoology and focus on discovering new species of animals often found in folklore or labeled as "monsters", labeled cryptids. Some of the most familiar cryptids are the Loch Ness Monster, Bigfoot, and the chupacabra. Here is a bit about these creatures—

### Loch Ness Monster

The Loch Ness Monster, or "Nessie" is an aquatic creature thought to live in Scotland's Loch Ness Sea and more profoundly, in Scottish folklore. The first known record of the Loch Ness monster dates back to A.D. 565.

The first modern sighting of Nessie was reported by a couple driving past the sea in 1933 who described it as 'something resembling a whale'. Shortly after, newspapers investigated a claim from Madmaduke Wetherall that stated large prints were visible on the Loch shoreline. It turned out to be a hoax and were imprints of a stuffed hippo foot.



This photo is arguably the most famous photo of Loch Ness, colloquially called “The Surgeon’s Photo”. It got its name from the fact the photographer refused to associate his name with the photo. The photo was found to be doctored. Some people claim this photo was influenced by the creatures portrayed in King Kong, which was released only a year before.

The 1987 search for Nessie, Operation Deepscan, was the largest search for the creature to date. The search took place over three days by a fleet of 24 boats. On one day,

the fleet detected sonar of an animal that was larger than a shark but smaller than a whale up to 590 feet down. They could not find the signal again. In 2003, BBC sponsored a search using advanced sonar and satellite technology but nothing was found. Scientists on the expedition declared the Loch Ness Monster to be a myth.

In the case of the Loch Ness Monster though, it is better to be safe than sorry. During the Visit Scotland Triathlon, participants were insured for \$1 million against a potential attack from the Loch Ness Monster.

*Photos courtesy of Wikipedia*

## Bigfoot or Sasquatch



Bigfoot is said to be a large, hairy, ape-creature figure that lives in the woods, and is strongly associated with Pacific Northwest. They are often depicted as the missing link between humans and primates, with roots in European and Native American folklore. Standing between 6-9 feet tall, Bigfoot's large footprint at up to 2 feet, is the most commonly cited evidence of its existence by believers.

Bigfoot stories have been a part of several cultures in North America, primarily Native American, reaching as far back as 1818. A few tribes that believed in Bigfoot included the Nlaka'pamux in British Columbia, the Lummi and Chehalis tribes.

Nearly one-third of all sightings have been in the Pacific Northwest. Other counterparts to Bigfoot worldwide include the Yeti and Abominable Snowman. The existence of Bigfoot has been debated and in a recent polling in 2014, more Americans believed in the existence of Bigfoot than the Big Bang Theory. Over 1000 sightings have been documented from 1818 to 1980.

Many scientists have discounted the existence of Bigfoot and have attributed its existence to a combination of folklore, hoaxes and misidentification. According to Robert Pyle, an ecologist, claims that most cultures feature a "bigfoot" like creature, indicating a need for larger than life figure. What do you believe?

## Chupacabra

In comparison to its predecessors like the Loch Ness Monster, the first stories of the Chupacabra originated as early as the late 1990s in Puerto Rico. This creature is described as having large eyes, spikes down its back and long claw and would drain the blood of its prey. This act earned the creature its name which means "goat-sucker" since it was believed to be killing livestock.

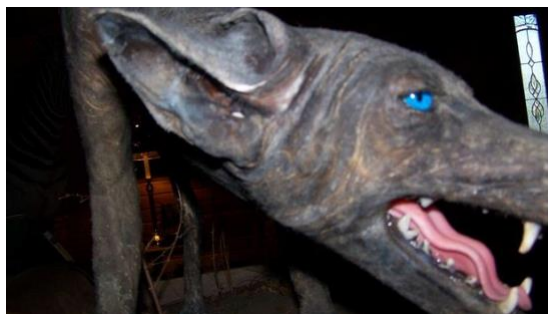
*Photos courtesy of Wikipedia*



The sighting came from Madelyne Tolentino who sighted an alien-like creature out her window. The story took off and quickly spread throughout the island, Latin America and eventually the United States.

However, in the early 2000s the chupacabra made appearances, not as a spiky bi-pedal

animal, but as a hairless dog-like creature. This led to the discovery of many chupacabra bodies, which led to an investigation that ultimately ended up disproving the existence of the animal. Most DNA samples taken from the bodies ended up being coyotes, dogs, or raccoons.



It is believed the misidentification around these carcuses is because these animals had succumbed to sarcoptic mange, which causes hair loss and skin issues. This is caused by tiny mites burrowing into the upper layer of the skin.

Another half to this mystery, is that the chupacabra also is known for attacking livestock and draining it of its blood through puncture marks, much like Dracula.

Scientists theorize that these attacks on animals actually come from common predators such as dogs, which could mimic puncture marks. As for the drained blood, thank a process known as lividity for that.

When an animal dies, the blood seeps to the lowest parts of the body and coagulates, stopping the flow of blood so if a rancher were to cut into the animal, expecting blood to seep through, it would not.

## Crossword Endangered Species Around the World

Q	E	L	G	A	E	Q	K	X	E	A	S	O
V	T	E	L	E	P	H	A	N	T	S	A	T
Y	L	C	O	C	K	A	T	O	O	X	A	X
B	Q	H	Y	U	N	K	Q	L	E	M	U	R
S	P	A	N	D	A	A	F	P	C	F	K	S
Y	D	A	A	K	T	P	A	N	T	H	E	R
I	Y	W	A	I	U	N	Z	I	V	I	F	J
W	Z	P	U	E	G	L	E	O	P	A	R	D
G	O	Q	T	O	N	T	U	R	T	L	E	D
K	A	K	L	Z	A	U	E	P	L	I	C	R
V	O	I	T	C	R	O	D	N	O	C	G	K
C	N	U	D	H	O	L	E	A	J	X	F	I
G	O	R	I	L	L	A	L	V	H	P	C	C

EAGLE

ORANGUTAN

LEOPARD

GORILLA

PANGOLIN

TURTLE

VAQUITA

LEMUR

DHOLE

COCKATOO

CONDOR

KAKAPO

PANDA

ELEPHANT

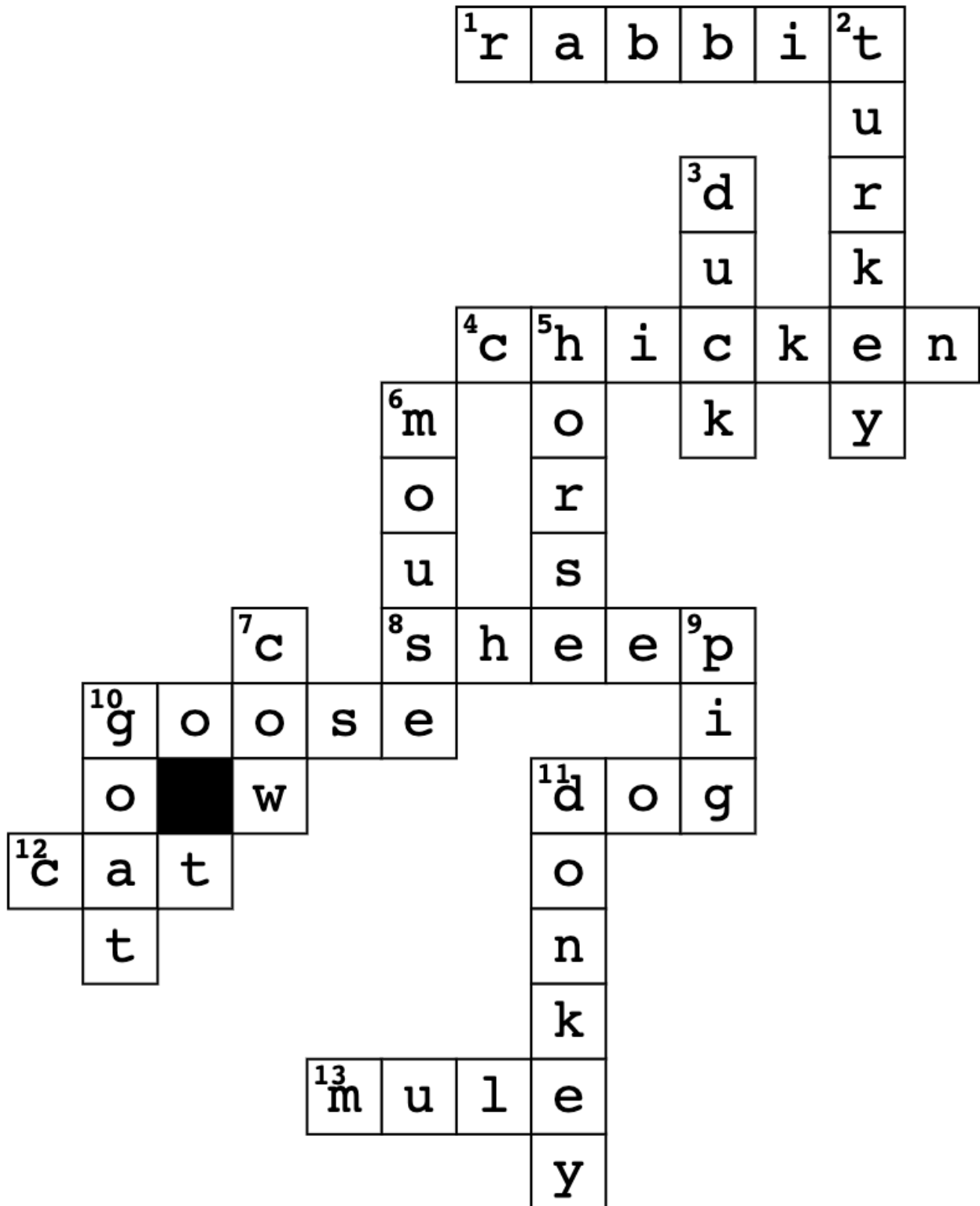
PANTHER





## ANSWER KEY

# Farm Animal Crossword Answers



## Sudoku Answers

7	6	8	4	9	1	5	2	3
4	9	5	2	7	3	8	1	6
1	2	3	6	5	8	7	9	4
8	3	7	9	1	4	2	6	5
2	4	9	5	6	7	3	8	1
6	5	1	8	3	2	4	7	9
5	1	2	3	8	6	9	4	7
9	8	6	7	4	5	1	3	2
3	7	4	1	2	9	6	5	8



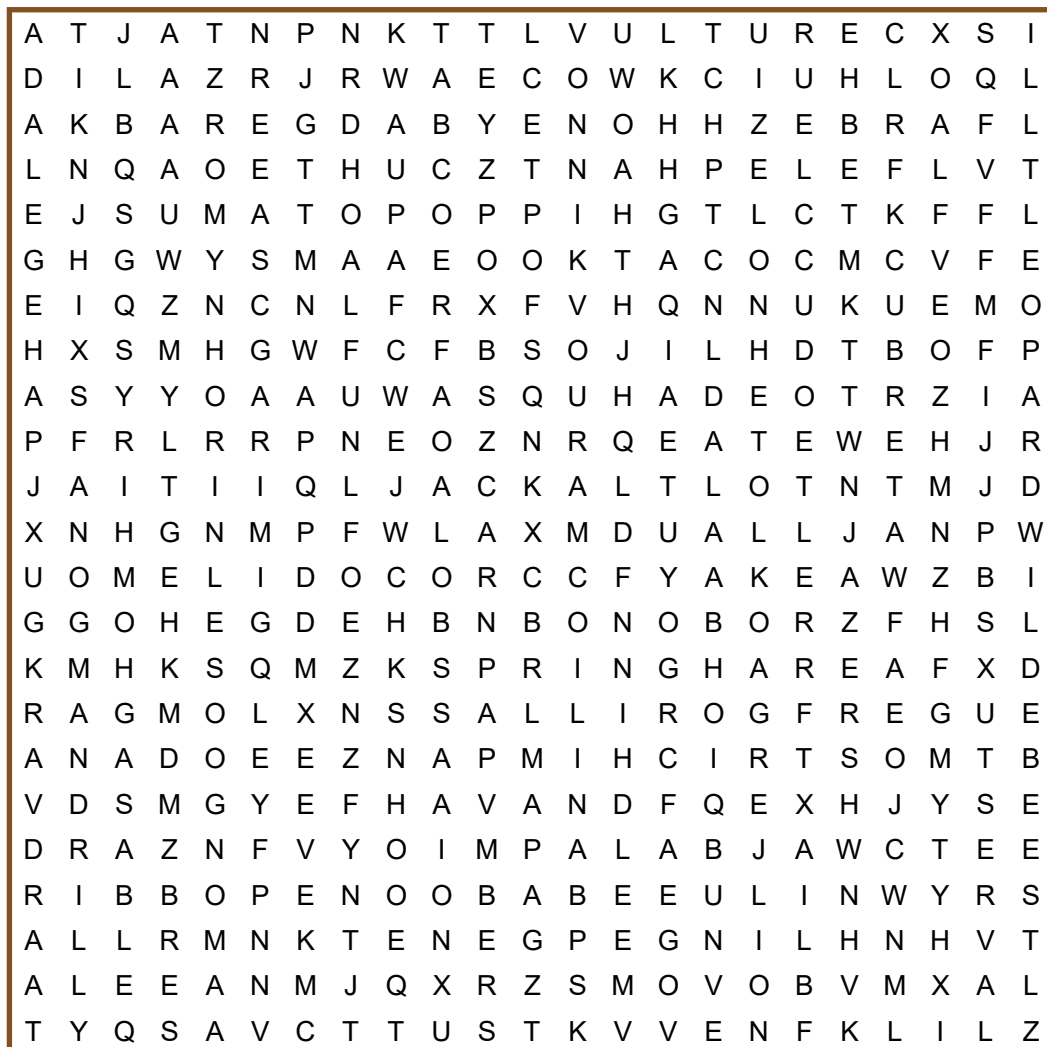
Name: \_\_\_\_\_ Date: \_\_\_\_\_



# African Animals

## Word Search

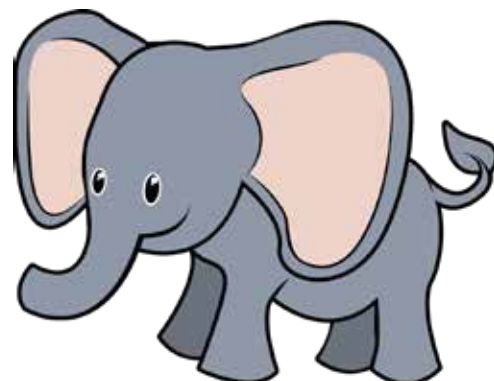
**DIRECTIONS:** Find and circle the African animals in the grid. Look for them in all directions including backwards and diagonally.



AARDVARK  
BABOON  
BAT  
BONOBO  
BUFFALO  
CHEETAH  
CHIMPANZEE  
CROCODILE  
ELEPHANT  
GAZELLE  
GELADA  
GENET  
GIRAFFE  
GORILLA  
HARTEBEEST  
HEDGEHOG  
HIPPOPOTAMUS  
HONEY BADGER  
HYENA  
HYRAX  
IMPALA  
JACKAL  
LEOPARD  
LION  
MANDRILL

MEERKAT  
MONGOOSE  
OSTRICH  
PANGOLIN  
PORCUPINE  
RHINOCEROS  
SABLE

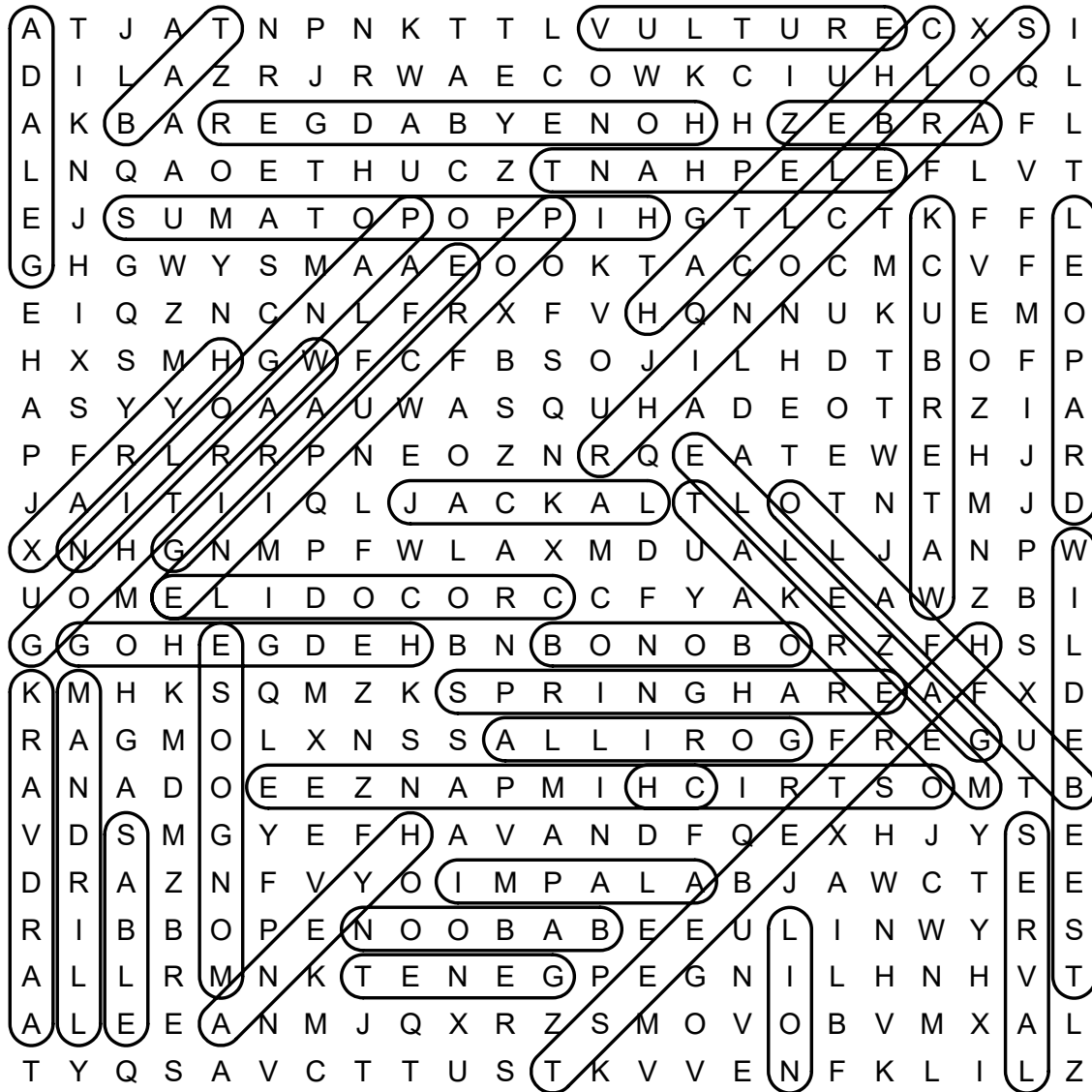
SERVAL  
SPRINGHARE  
VULTURE  
WARTHOG  
WATERBUCK  
WILDEBEEST  
ZEBRA

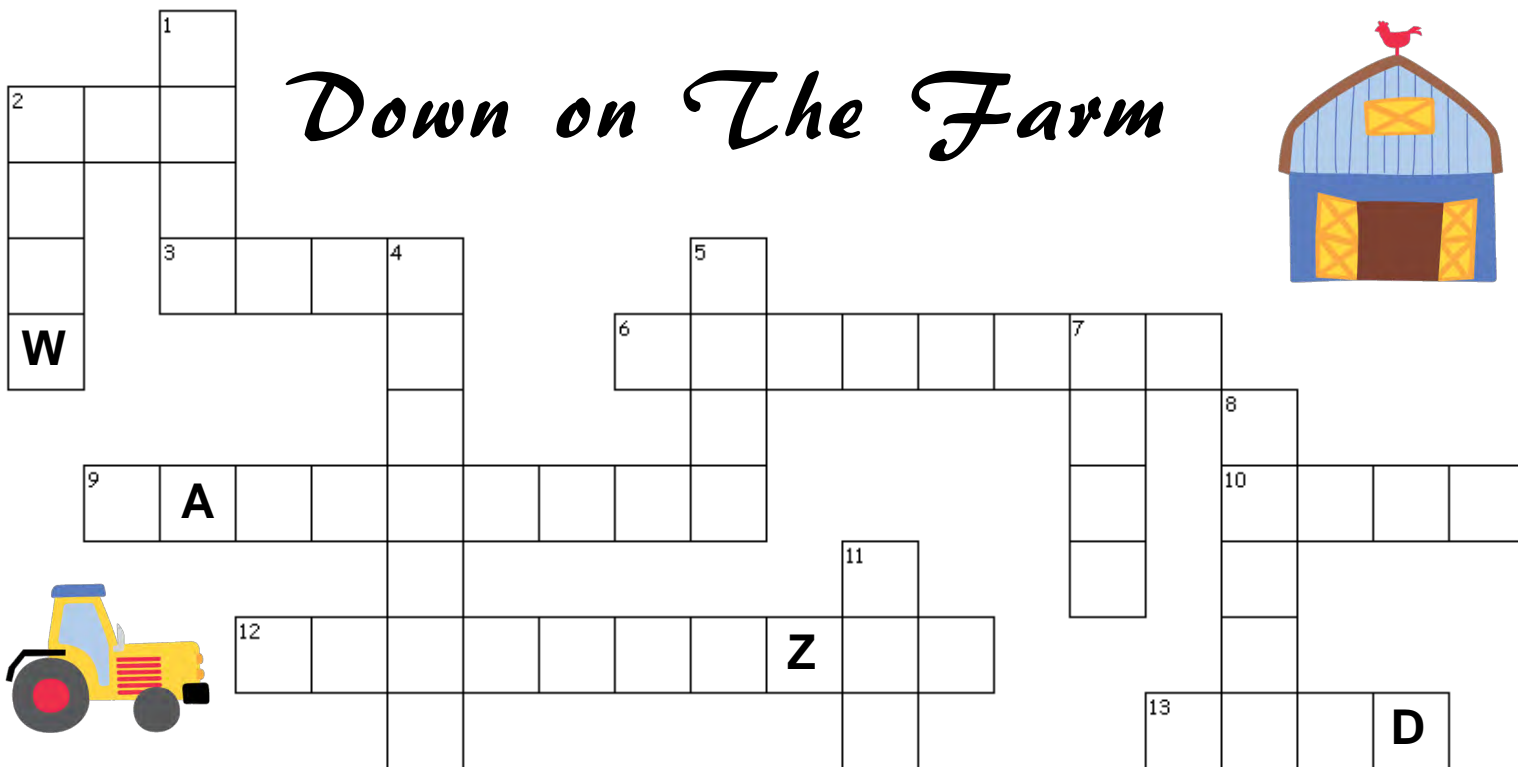


# African Animals

## Word Search

### SOLUTION





Look for the following words associated with farms.

## ACROSS

2. A farm animal with a flat snout that roots around in the soil
3. A tower a farm that is used to store grain
6. A large pile of dried grass oven seen in fields
9. A dwelling that serves as the primary residence in an agricultural setting
10. Tall plant grown for its whole yellow or white seeds, which are eaten cooked, made into flour, or fed to animals
12. A natural or chemical substance that is spread on land in order to make plants grow well
13. A large group of livestock
15. A barnyard bird that is very loud early in the morning
16. The act of gathering a crop



## DOWN

1. Oval or round objects surrounded by a shell from which life emerges
2. To turn up the earth before planting seeds
4. A piece of land planted with fruit trees
5. Part of a fence that is used like a door to get into a field
7. A pen for confining poultry.
8. An object made to resemble a person that is used to frighten birds
11. A piece of grassland often used as a pasture or hayfield
14. A building that is divided into separate stalls for individual animals



# Crossword Solution

## Down on the Farm Crossword

### ACROSS

- 2 – A farm animal with a flat snout that roots around in the soil – **PIG**
- 3 – A tower a farm that is used to store grain – **SILLO**
- 6 – A large pile of dried grass oven seen in fields – **HAYSTACK**
- 9 – A dwelling that serves as the primary residence in an agricultural setting – **FARMHOUSE**
- 10 -Tall plant grown for its whole yellow or white seeds, which are eaten cooked, made into flour, or fed to animals – **CORN**
- 12 – A natural or chemical substance that is spread on land in order to make plants grow well – **FERTILIZER**
- 13 – A large group of livestock – **HERD**
- 15 – A barnyard bird that is very loud early in the morning – **ROOSTER**
- 16 – The act of gathering a crop – **HARVEST**

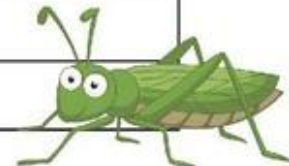
### DOWN

- 1 – Oval or round objects surrounded by a shell from which life emerges – **EGGS**
- 2 – To turn up the earth before planting seeds – **PLOW**
- 4 – A piece of land planted with fruit trees – **ORCHARD**
- 5 – Part of a fence that is used like a door to get into a field – **GATE**
- 7 – A pen for confining poultry – **COOP**
- 8 – An object made to resemble a person that is used to frighten birds – **SCARECROW**
- 11 – A piece of grassland often used as a pasture or hayfield – **MEADOW**
- 14 – A building that is divided into separate stalls for individual animals – **STABLE**

# Insects Word Scramble

All of the scrambled words below are names of insects you have probably heard about. Can you put the letters in the right order to spell the 19 different insect names correctly?

OUTMQISO	
BTLTEUYFR	
MTHO	
LEEBET	
CCIDAA	
ELYFSRHO	
PAWS	
ITKSC GBU	
AYGPRNI NMATSI	
EBE	
ALFE	
LNFOAYGRD	
AGDBLYU	
PSESHRA GPOR	
EIRETTM	
COOCHRKAC	
NAT	
RIEKCTC	
YLF	



# Insects Word Scramble

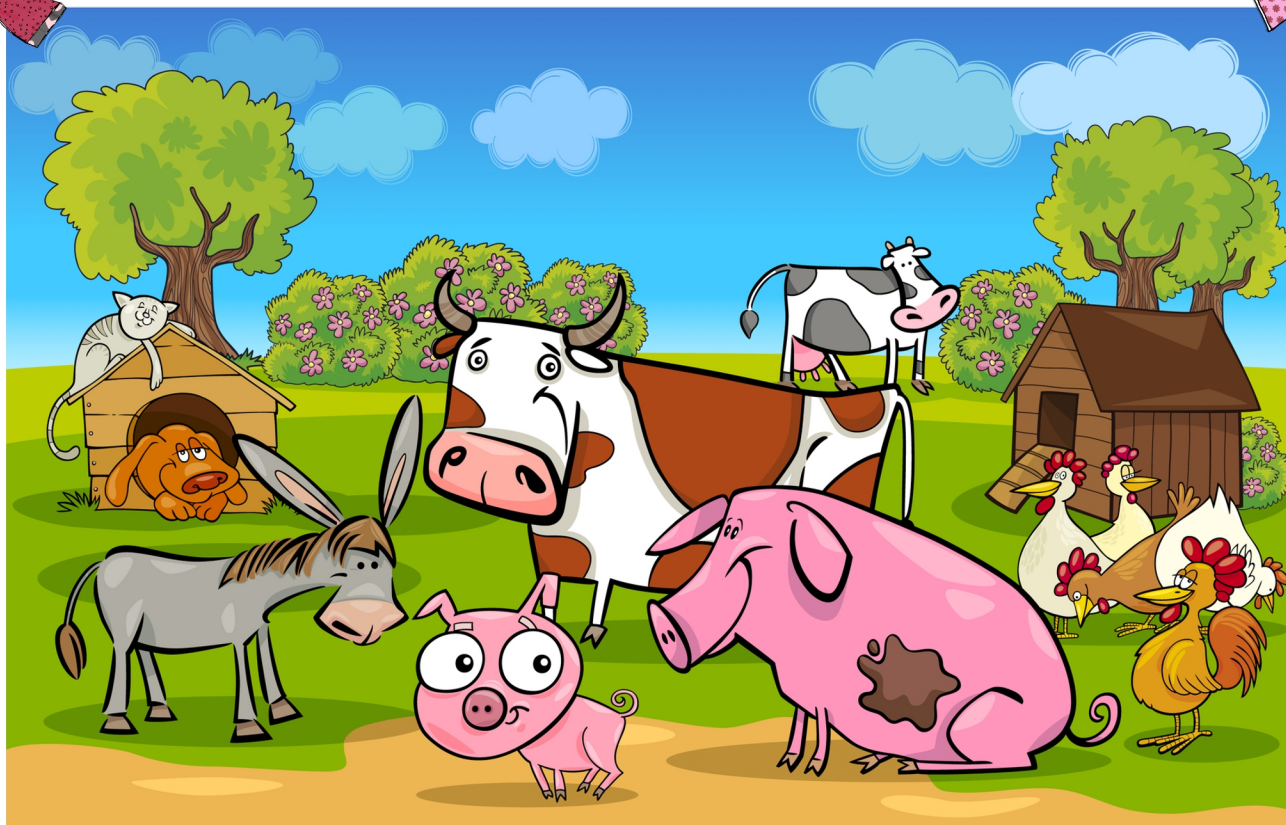
SOLUTION

OUTMQISO	MOSQUITO
BTLTEUYFR	BUTTERFLY
MTHO	MOTH
LEEBET	BEETLE
CCIDAA	CICADA
ELYFSRHO	HORSEFLY
PAWS	WASP
ITKSC GBU	STICK BUG
AYGPRNI NMATSI	PRAYING MANTIS
EBE	BEE
ALFE	FLEA
LNFOAYGRD	DRAGONFLY
AGDBLYU	LADYBUG
PSESHRA GPOR	GRASSHOPPER
EIRETTM	TERMITE
COOCHRKAC	COCKROACH
NAT	ANT
RIEKCTC	CRICKET
YLF	FLY





Find 10 Differences



# Spot the Difference Solution

